

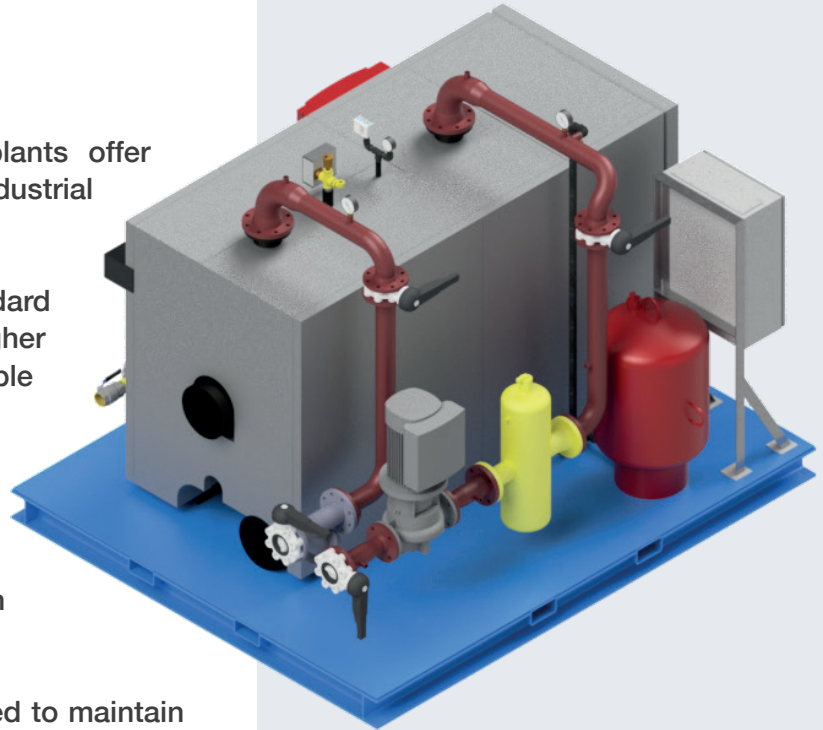
PACKAGE HOT WATER SYSTEMS

Our packaged low temperature hot water plants offer solutions for both process and commercial / industrial heating applications.

Built in house and fully test fired, our standard packages range from 500Kw to 2000Kw. Higher output & multiple boiler systems are also available on request.

The Incorporation of fully modulating high efficiency burners (up to 98%) inverter driven intelligent pumps and the use of multiple control modes, ensure all systems supplied can be fully optimised to any project requirement.

Low Loss header packages can also be included to maintain optimum hydraulic balance between primary and secondary circuits safeguarding from irregular flows and increasing the life of the boiler.



- **Standard packages from 500Kw – 2000Kw.**
- **Larger output & multiple boiler systems built to specification.**
- **Natural gas or LPG.**
- **Hydraulic Separation via Low Loss Headers.**
- **High efficiency boilers & pumps.**
- **Air & dirt separation.**
- **Water quality testing & treatment.**
- **Auto fill units for system top up.**
- **Degassing Units.**
- **Applications including Process hot water generation & commercial / industrial heating systems.**
- **Installation, commission & maintenance services available.**

CONTACT

If you require further information on this or any other product or service, please contact our specialist engineers on **+44 (0)1282 508555**. Alternatively email us: info@ppp-ltd.co.uk

Proctor Process Plant Ltd
Billington Rd Ind Est, Billington Rd
Burnley, Lancashire BB11 5UB
Telephone: +44 (0)1282 508555
Email: info@ppp-ltd.co.uk